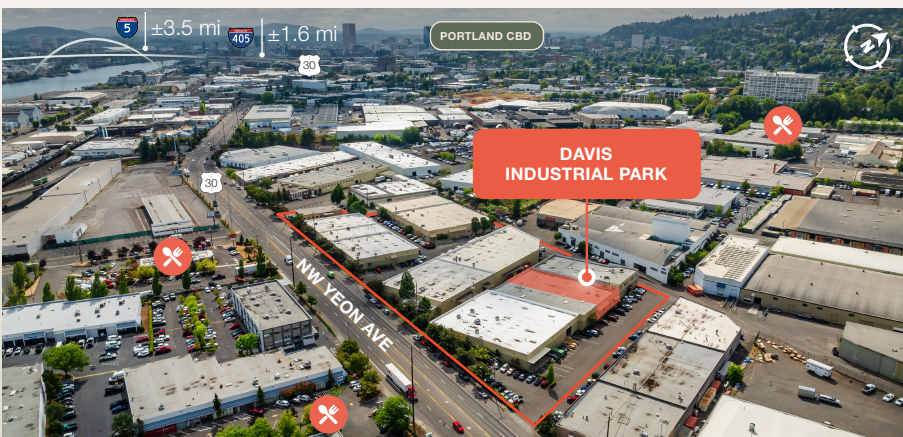


INDUSTRIAL/WAREHOUSE
FOR LEASE

Davis Industrial Park

3261 NW Yeon Ave, Portland, OR 97210
Building F



Key Features



12,000 sq. ft. shell



1,665 sq. ft. office



2 dock doors
1 leveler

14' clear height

LED lighting

Convenient access to
I-405 and I-5

Desirable Guilds Lake
location

Available February 2025

Lease Rate (NNN):

\$0.90/sq. ft. shell

\$1.10/sq. ft. office

Jake Bigby

jakeb@pactrust.com

Caitlin Knecht

caitlink@pactrust.com

503.624.6300

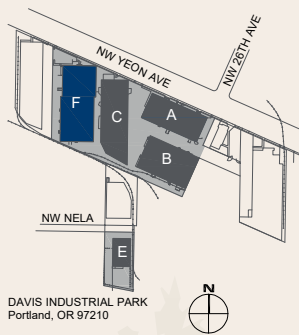
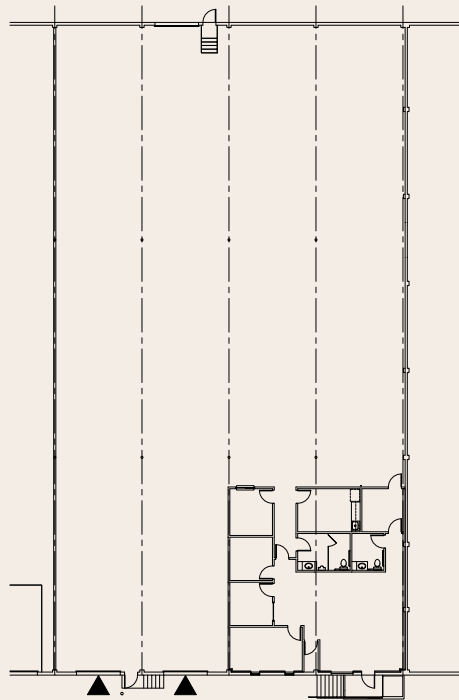
Owned & Managed by

PACTRUST

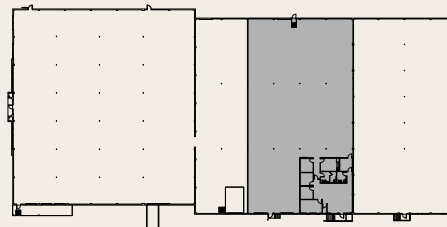
Space Plan

3261 NW Yeon Ave, Portland, OR 97210

12,000 Sq. Ft.



▽ GRADE ACCESS
▼ DOCK ACCESS



BUILDING PLAN

Jake Bigby
jakeb@pactrust.com

Caitlin Knecht
caitlink@pactrust.com

503.624.6300
www.PacTrust.com